



ELECTRIC SERVO PRESSES



- Servo Presses from 100 kg to 30 Tons
- Position Accuracy of 10 Microns
- Bosch Rexroth Servo Motor and Drives
- Inbuilt Precision Load Cell
- User Friendly Software and HMI option available.
- Load Versus Travel Graph Monitoring Available.
- Energy Efficient over Hydraulic Presses
- Near Zero Maintenance.
- Brushless Motor with Absolute Encoder
- Higher Ball Screw Life upto 20 Million Cycles

ADVANTAGES

- Very precise measuring system.
- Products defect and process abnormalities detected in run.
- Scrap cost reduction.
- Communication with all kind of PLC through Ethernet TCP/IP.

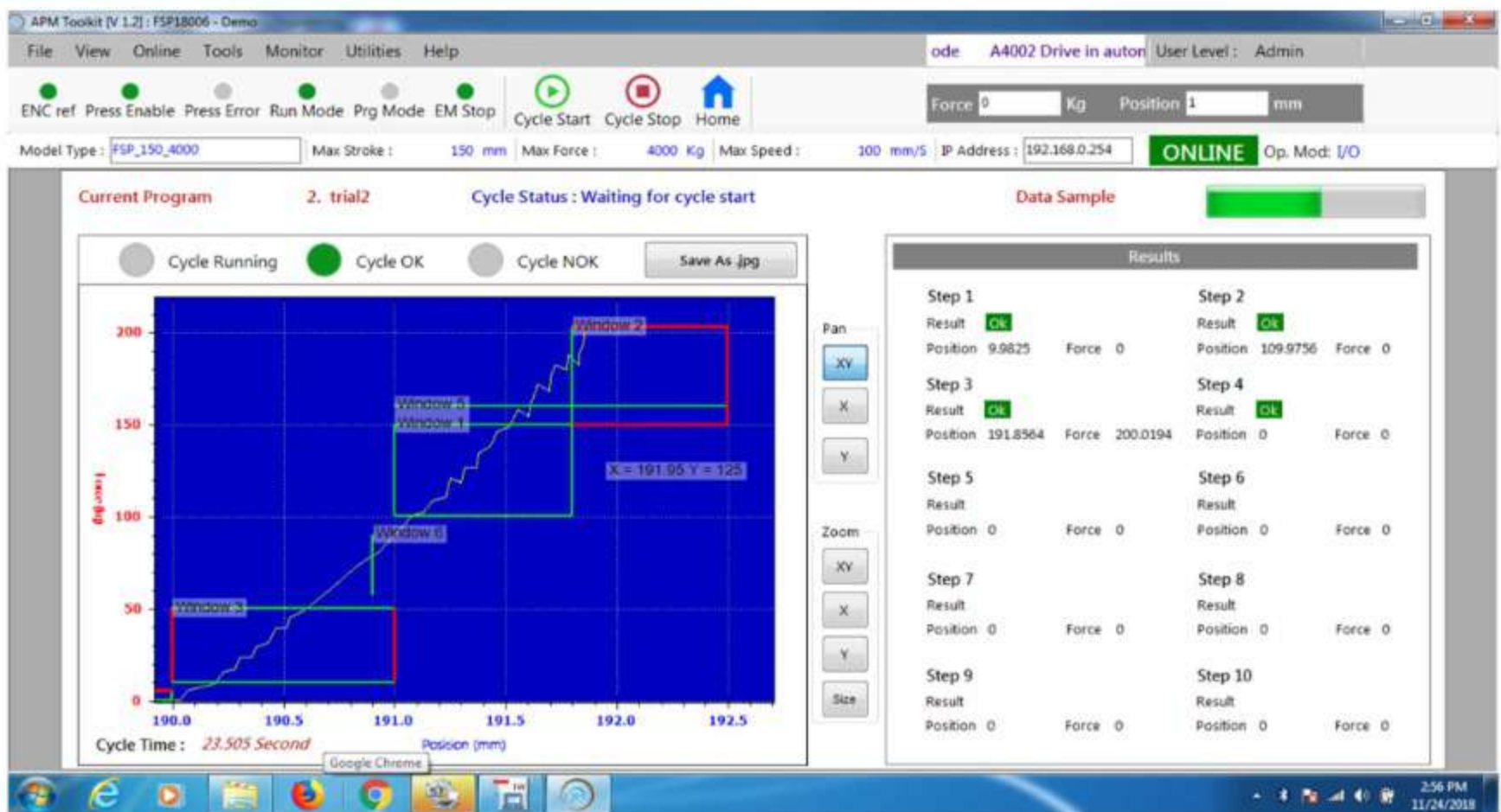
- Real time process monitoring.
- Servo press and process monitoring set up don't need any experience in PLC Programming.
- Maintenance cost lesser than a hydraulic unit.
- Energy cost per year lesser than a hydraulic unit.

APPLICATION

- Bearing and bush assembly
- Valve guide and seat pressing
- Clinching and crimping

- Straightening
- All types of precision assembly

SOFTWARE



MODEL	ESP-01	ESP-02	ESP-03	ESP-04	ESP-06	ESP-08	ESP-10	ESP-15	SEP-20	ESP-25	
COMPRESSIVE FORCE (TONS)	1	2	3	4	6	8	10	15	20	25	TONS
MAX RAM SPEED	260	222	217	254	260	200	204	154	155	121	mm/s
MAX RAM ACCELERATION	1.3	1	1.4	1.6	1.7	1.3	1.3	1	1	1	m/s ²
RESOLUTION	2.44	1.22	1.46	1.95	2.6	1.95	1.95	1.95	1.4	1.22	µm
RAM REPEATABILITY	0.01	0.01	0.01	0.01	0.01	0.01	0.01	0.01	0.01	0.01	mm
FORCE MEASURE ACCURACY	0.3	0.3	0.3	0.3	0.3	0.3	0.3	0.3	0.3	0.3	%FS
MAX OUTPUT POWER	5	8	8	12	20	20	33	33	54	54	Kw

Ritters Automation Pvt. Ltd.

Unit 1 : M-160, Sector-1, DSIIDC, Bawana, New Delhi -110039

Unit 2 : Plot No. 2, Street No. 9, Sector 7B, Model Economic Township,
Sondhi, Distt. Jhajjar, Haryana-124105

Phone : +91-9711922279, +91-11-27753720, 27753721

E-mail : info@rittersindia.com

Web : www.rittersindia.com

