

HOUR



**Efficiency, light weight,
no damage to the base material**

HAND-HELD LASER CLEANING MACHINE

Application

- √ Surface oil, stains, dirt cleaning
- √ Surface coating, coating removal
- √ Welding surface / spray surface pretreatment
- √ Rubber mold residue cleaning
- √ Metal surface rust removal
- √ Stone surface dust and attachment removal

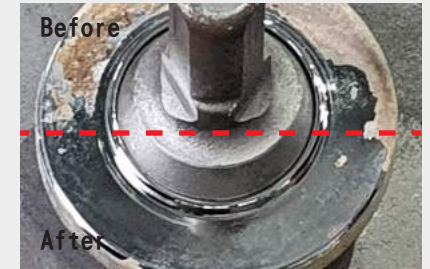
Features

- √ No damage to parts.
- √ Hand-held design is easy to carry.
- √ High efficiency, saving time.
- √ No chemical required, safe and environmentally friendly.
- √ Quick setup.
- √ No additional consumables are generated during cleaning.
- √ Simple interface operation

Standard Model HR-200J

Performance technical parameters

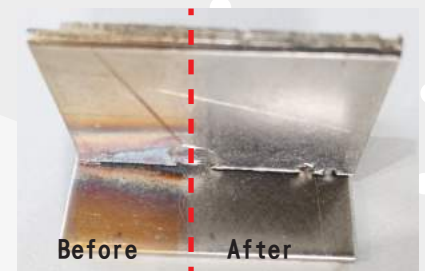
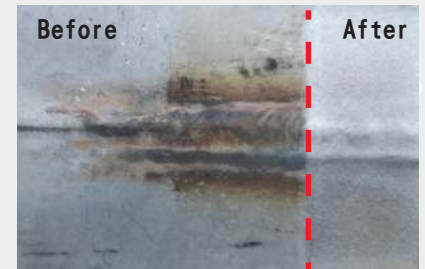
| | |
|----------------------|---|
| Laser wavelength | 1064nm |
| Dimensions | H500 X W400 X D550 mm |
| Scope of application | 5M + 10M (Note 1: Based on the final business description.) |
| Fiber length | 5M |
| Input voltage | Auto Switch 110V/220V |
| Weight | 60kg |



Weld bead Model HR-LCW

Performance technical parameters

| | |
|----------------------|---|
| Laser wavelength | 1064nm |
| Dimensions | H450 X W330 X D550 mm |
| Scope of application | 3M + 10M (Note 1: Based on the final business description.) |
| Fiber length | 3M |
| Input voltage | Single phase 220v or 110v / (optional) Auto Switch 110V/220V |
| Weight | 50kg |



The pictures are for reference only, please refer to the actual equipment.