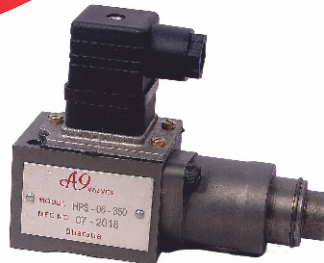
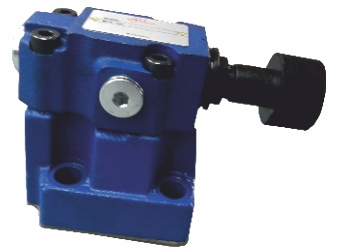


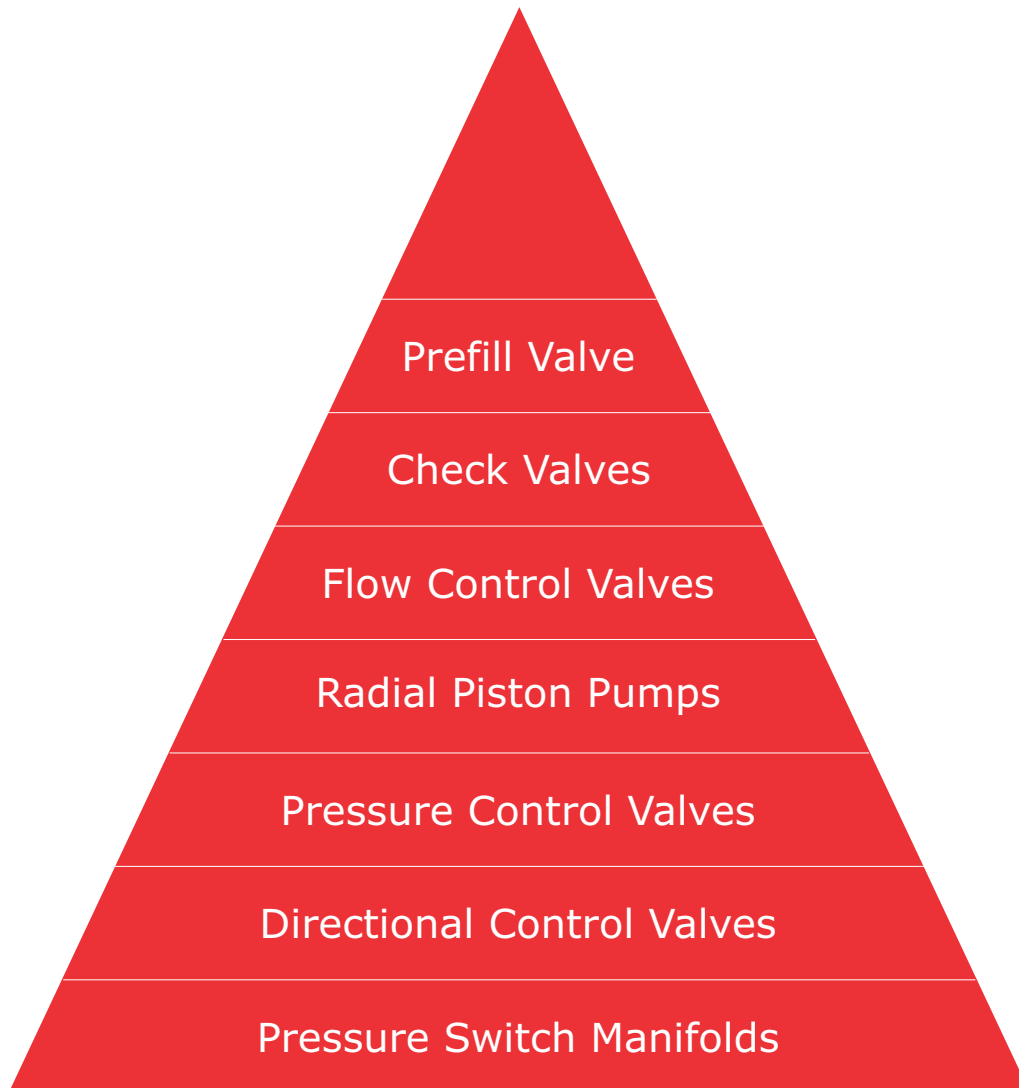
A9 VALVES



House Of Hydraulics

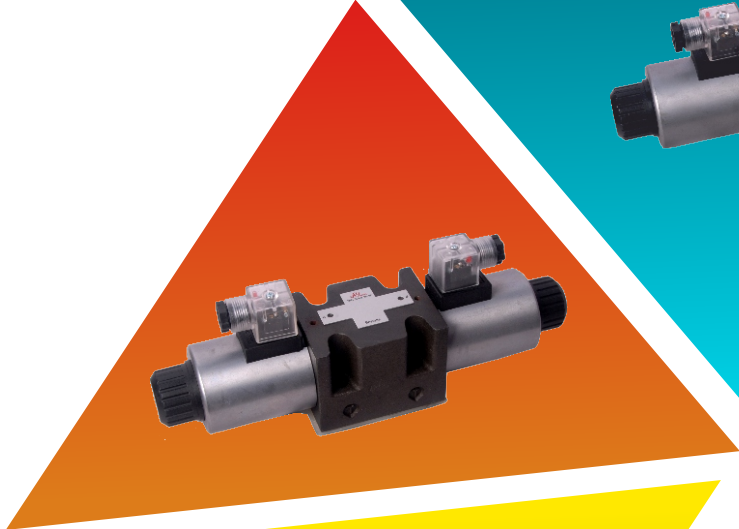
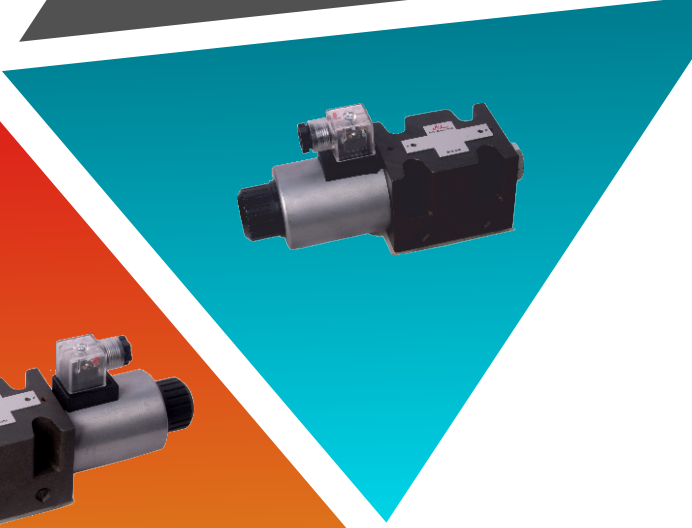
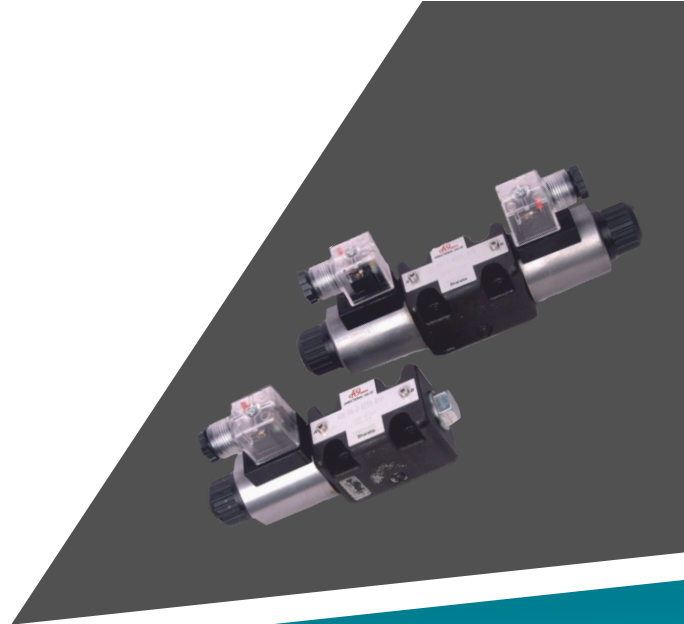
# Hydraulic Pumps and Valves

## House of Hydraulic Elements



# DIRECTIONAL CONTROL VALVES DIRECTIONAL CONTROL VALVE CODE: 4DS

Spool type directional control valves available in 24VDC, 12 VDC And 220V AC coils In spool configuration D, G, J , E, H.



Model code	Max working pressure	Max Flow l/min
4DS-06	315	40
4DS-10	315	80
4DS-16	315	160
4DS-25	315	250

# RADIAL PISTON PUMPS

CODE: 1RP / 1RPE

Radial Piston Pumps are fixed displacement, bi directional and high pressure pumps. Oil immersed pumps with extended shaft is available.

**Pressure:** Standard pumps are up to 350 Bar and on demand 700 Bar.

Pr Bar	700	450	350	300	250	200
No Of Pumping Elements	Flow in Lpm @ 1440 rpm					
	A	B	C	D	E	F
3	1.5	2.5	3.7	4.3	5	5.8
5	2.6	4.2	6.2	7.2	8.4	9.7
7	3.7	5.8	8.6	10	11.7	13.6



## PRESSURE CONTROL VALVES DIRECT OPERATED PRESSURE RELIEF VALVE CODE: RVD

Direct Operated cushioned poppet valves are available in cartridge threaded and sub plate type. In options of set screw and knob type.

Pressure: Standard upto 350 Bar and on demand 700 Bar



Model code	Max working pressure (Bar)	Max Flow l/min
RVD 06	700	30
RVD 10	315	80
RVD 20	315	160

## PILOT OPERATED PRESSURE RELIEF VALVE CODE: DB 10

Pilot Operated pressure relief valve can handle high flow. Sub plate mounted construction with internal/ external drain.

Pressure: Standard upto 315 Bar .

Model code	Max working pressure (Bar)	Max Flow l/min
DB 10	315	150



## PRESSURE CONTROL MODULE

CODE: MPB 20-06 / MPB 20-10

Hi Low Circuit system to handle double pump, consist of high pressure Relief valve, Check valve and low pressure unloading valve.



Model code	Max Hp Pr	HP Flow	Max Lp pr	LP Flow
MBB 20-06	315 Bar	25 Lpm	100 Bar	160 Lpm
MPB 20-10	315 Bar	60 Lpm	100 Bar	160 Lpm

## COUNTER BALANCE VALVE

CODE: FVD 10 / FVD 20

Counter Balance valves are seat valves offer free flow from port B to A And give leak free in opposite direction to set pressure.

Model code	Flow	Max pre	Max wr pr
FVD 10	30 l/min	200 bar	315 bar
FVD 20	115 l/min	200 bar	315 bar



## FLOW CONTROL VALVES THROTTLE CUM CHECK VALVES

CODE: TCNRM 06 / 10

Throttle cum check valve modular construction offer throttle cum check in both A and B port and can be used as metering in and meter out.

Model code	Max working pressure (Bar)	Max Flow l/min
TCNRM 06	315	35
TCNRM 10	315	100



## THROTTLE CUM CHECK VALVES THREADED TYPE

CODE: BVR

Pressure: Standard pumps are upto 350 Bar

Model code	BRV 08	BRV 10	BRV 12
Thread	3/8" BSP	1/2" BSP	3/4" BSP



## DIRECT OPT CHECK VALVE

CODE: NRT / NRS

Poppet seat type valves allow free flow from port A to B and give Leak free in opposite direction. Available in line mounting & sub plate

Model Code	NRT 06	NRT 08	NRT 10	NRT 15	NRT 20
Max pr	315	315	315	315	315
Max flow	10	20	30	80	120

Sub Plate Type

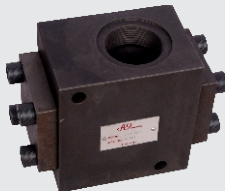
Model Code	NRS 10	NRS 20	NRS 30	-	-
Max flow	30	120	280	-	-



## PILOT OPERATED CHECK VALVE

CODE: NRP I T / S

Seat type Valves with internal drain.  
Threaded or sub plate mounting Construction.  
Max pressure 315 Bar



Model code	Max working pressure (Bar)	Max Flow l/min
NRP I 10 T / S	315	80
NRP I 20 T / S	315	150
NRP I 30 T / S	315	350

## PILOT OPERATED CHECK VALVE MODULAR

CODE: NRPM 06 /10

Seat type Valves with internal drain.  
Threaded or sub plate mounting Construction. Max pressure 315 Bar

Model code	Max working pressure (Bar)	Max Flow l/min
NRP M 06	315	40
NRP M 10	315	80



## PREFILL AND EXHAUST VALVE CODE: EXP



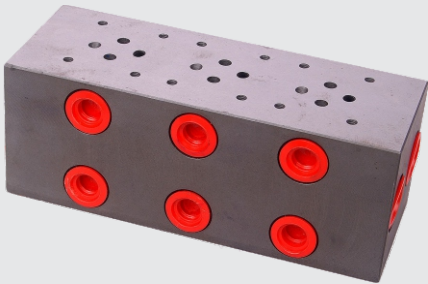
Used for prefilling and exhausting of hydraulic cylinder. Used as check valve. Decompression feature is optional

Model code	EXP 50	EXP 63	EXP 80	EXP 100
Max pr	315 Bar	315 Bar	315 Bar	315 Bar
Max Flow	230	365	600	950

## PRESSURE SWITCH

Code: HPS 06

Piston type pressure switch,  
sub plate mounted  
Pressure range 50, 100, 200, 350 Bar



## MANIFOLD BLOCKS

Code: MFD

NG 06 and NG 10 Standard mounting  
Valve mounting station from 1 to 6  
Single station with relief valve

**A9** VALVES



## **CM Hydro Systems Pvt Ltd**

Plot #203/1, IDA Cherlapally, Phase II, Sector 3,  
Lane 5, Hyderabad, 500029, +91 94400 55115  
mktg@cmhydraulics.com, www.cmhydraulics.com