



CRAFTING

EXCELLENCE IN METAL

CORPORATE PROFILE

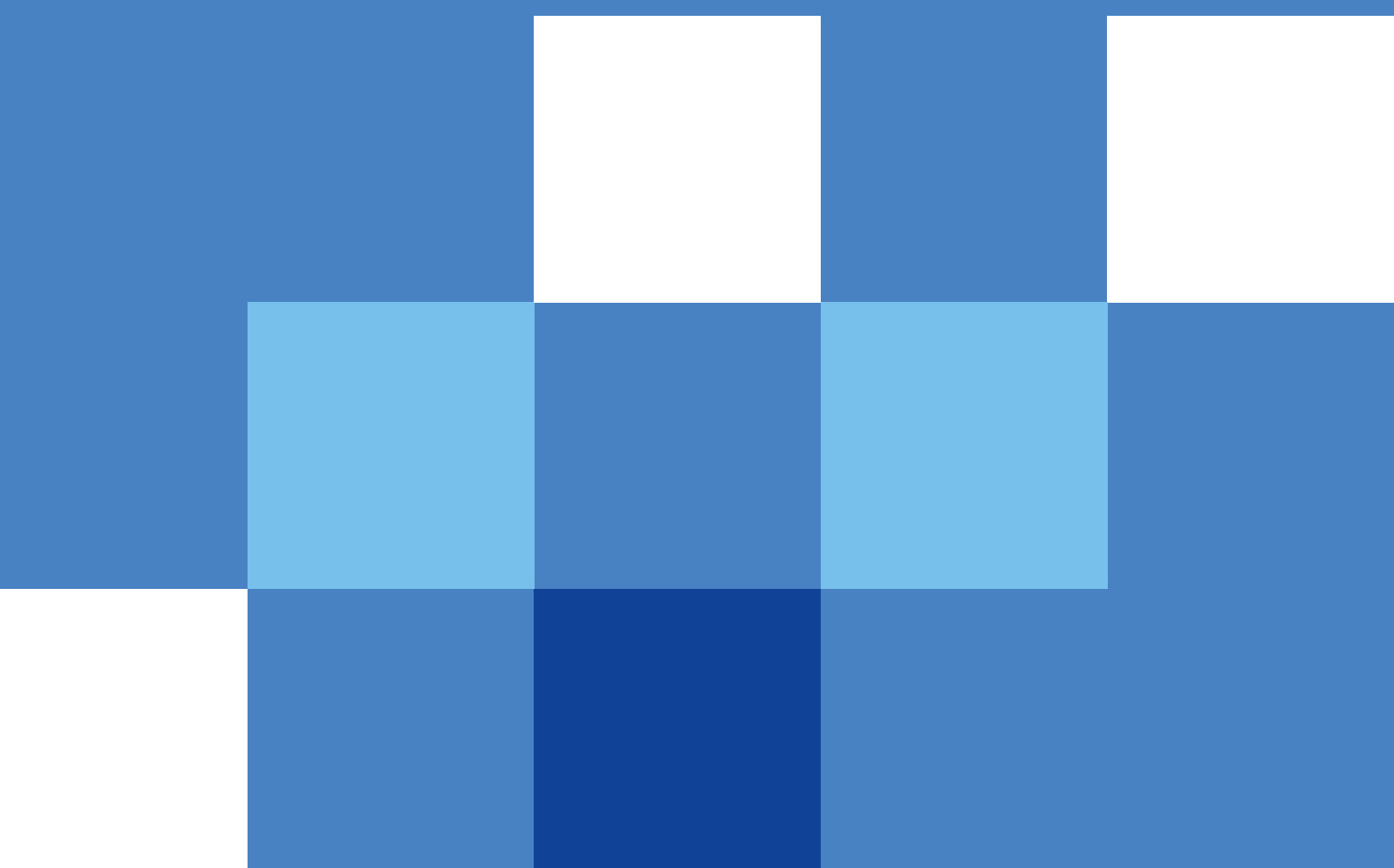
Welcome to Optimum Solutions. At Optimum Solutions, we are proud to be the leaders in the sheet metal industry, providing cutting-edge solutions with a proven track record of reliable product delivery. Our comprehensive range of services includes Machines, Tooling, Software, Production Lines, Machine Parts, and Automation with Robotics. Since establishment, 2011, our commitment to excellence and innovation has made us a trusted partner for businesses seeking high-quality sheet metal solutions.

Our Offerings:

Machines & Tooling, Software, Production Lines, Machine Parts, Automation with Robotics.

Our Mission:

Optimum Solutions is dedicated to the relentless pursuit of excellence and gaining respect in the industry. Our mission is to continuously innovate and provide world-class after-sales service while maintaining our commitment to environmentally friendly practices. We strive to earn the respect of both our customers and global competitors, with your satisfaction being our greatest achievement.





**A Message from
Our Managing Director:**

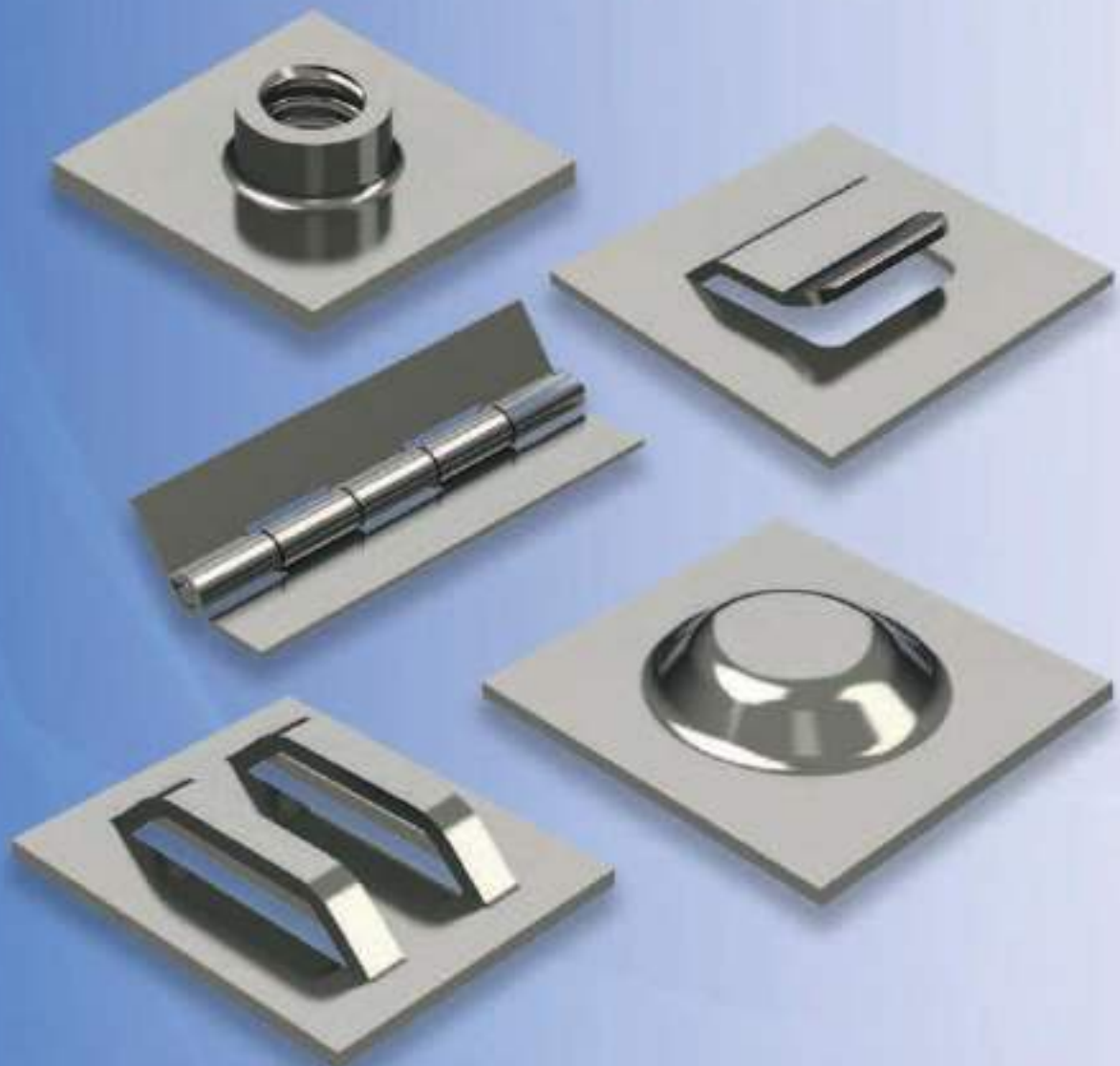
"Excellence is achieved by those who dare to dream and work hard to realize those dreams."

As the Managing Director of Optimum Solutions, I am proud of our journey and the unwavering commitment of my team. Our company and our team are our greatest strengths, and together, we have made it our mission to ensure customer satisfaction. We are driven by our passion and dedication, guided by our motto:

**PRODUCE RELIABLE AND
PERFORMING PRODUCTS
WITH GREAT IDEAS**

TOOLING SYSTEMS AND ACCESSORIES

Wilson Tool International is the largest independent tooling manufacturer in the world, provides the most comprehensive line of tooling systems and accessories for the Stamping, Bending, and Punching industries. As the world's largest, and only, tooling provider to manufacture tooling solutions for industries, Wilson Tool is uniquely positioned to offer the most comprehensive and unique tooling solutions to help customers resolve their most challenging fabrication issues.





PRECISION BEYOND BENDS

At the Swiss company PBT AG, we develop and produce profile bending machines and digital control systems that satisfy the highest requirements in terms of quality and technical performance capabilities.





Through the use of intelligent processes, our technologies have been setting industry standards since 1991, and are used in practically all segments of the metalworking industry: automotive, aerospace, window and façade engineering, conveyor technology, and many more rely on the quality and precision of our profile bending machines.

NEW FACE OF PLATE ROLLING

AMB PICOT has 150 years of expertise in the design and manufacture of plate bending machines. Over the years, AMB Picot has enriched its range to adapt to its customers' technical requirements, manufacturing two, three and four-roller bending machines. All its bending machines can be equipped with numerical control systems that give operators.





**WITH EASYROLL® –
THE FIRST PART IS ACCURATE
WITHOUT CORRECTION**



TIGER LEAP IN SHEET METAL PRODUCTION

Since its establishment in 1975, Pivatic has developed as the leading solution provider to sheet metal fabricators. Parts produced using Pivatic solutions can be found in many everyday objects and applications from metal furniture, lighting equipment, electric motors and electrical cabinets to institutional kitchen equipment and industrial construction.



Pivatic's modular approach offering standardised equipment with minimal lead times allows customers to achieve maximum profitability in the least amount of time. Pivatic's products for punching and bending can be implemented as best suits production needs.



LEVELING TECHNOLOGY MADE WITH PASSION

Thanks to the levelers and metal flattening machines from ARKU – metal panels and parts with burrs, unevenness or internal stresses are now an issue of the past. As the technology and market leader in leveling technology, we offer the world's broadest spectrum of high-performance precision levelers.

ARKU



These range from levelers for thin or complex parts to straighteners for thick plates and even AHSS materials. All of these systems ensure perfectly flat, stress-relieved sheets and parts. For decades, we have been the market and technology leader for precision levelers. Innovative deburring technology expands our industrial expertise.

FUSION OF ITALIAN INNOVATION

LAG: Press Brake, shears, Fastener Insertion Machine, Turret Punch Press. LAG products represent a synthesis between the Italian technology innovation, attention to detail and design and the great Chinese production capacity. These values added with the best relationship between quality and price on the market.





One of the strength of the company is the constant research towards product innovation which can improve customer's working performance allowing to reduce production is in the costs, scrap and consequently increasing productivity. Innovation is in the nature of the company and the people that belong to it. Enthusiastic and qualified staff leads LAG to be a company whose product becomes pride for all joining the production process.

CRAFTING EXCELLENCE IN METAL FINISHING

Since our humble beginnings in 1994 in Parma, GECAM has been at the forefront of designing and manufacturing precision machines for grinding, deburring, and finishing sheet metal. Rooted in a commitment to quality and innovation, we proudly use 100% Italian materials, setting a standard of excellence in the industry.





Machines designed for deburring, finishing and rounding edge of metal surfaces with useful working width from 300 mm up to 1350 mm

INSPECTION IN A CLICK

Planar is a 2D inspection machine that allows manufacturers to simply and quickly verify product quality by performing 2D inspection, CAD comparisons & reverse engineering in seconds. InspecVision Ltd. was established in March 2003 to develop a range of precision inspection machines for industrial applications. The company was honoured with the prestigious Queen's Award for Enterprise: International Trade in April 2021 for it's outstanding export performance.





Opti-Scan 3D uses a high speed, high resolution industrial camera and an LED DLP projector to scan the surfaces of an object. Patterns of light are beamed from the projector onto the part, these patterns are recorded by the camera and used to create surface measurements.



FABRICATION TECHNOLOGY

PRADA NARGESA S.L. is a family company founded in 1970 located near Barcelona, Spain with more than 40 years experience in the branch of manufacturing industrial machinery: Propane furnaces. Hydraulic Press brakes, shears, broaching machines weld positioners.

The NEW MC650 Nargesa section and pipe bending machine is specially designed to carry out mass production through the control, which saves the position of the rollers in each curve to repeat the same operations later, without longitudinal positioning control. It is ideal for manufacturing flanges, greenhouses, railings, large structures for construction... Maximum capacity for bending round pipe: 4" inches or 101,6 mm.



N NARGESA®



TAPPING AND DRILLING WITH ELECTRONICS

To meet its production needs in the field of mechanical processing, Volumec produces the first articulated arm machine and immediately receives feedback on the product's potential, thus starting a research and development department and then producing and marketing tapping machines.

To meet the new requirements in the field of production and safety, a range of articulated arms and manipulators called EASYARM is produced, "zero gravity" systems capable of balancing various types of tools, increasing operator sensitivity and significantly reducing fatigue. The range of ROVER and EAM manipulators, on the other hand, allows lifting and moving weights up to 50 kg with a unique and effective system even where work spaces are reduced.





SHAPE COPPER BUSBAR INTO LINK

Established in 1996, Euro-Asia Machinery Group stands as a beacon of excellence in CNC technology and for electrical industry application. With a robust commitment to innovation and precision engineering, we specialize in the development of advanced CNC technology for busbar processing, bespoke busbar design software, and state-of-the-art CNC busbar processing machinery.



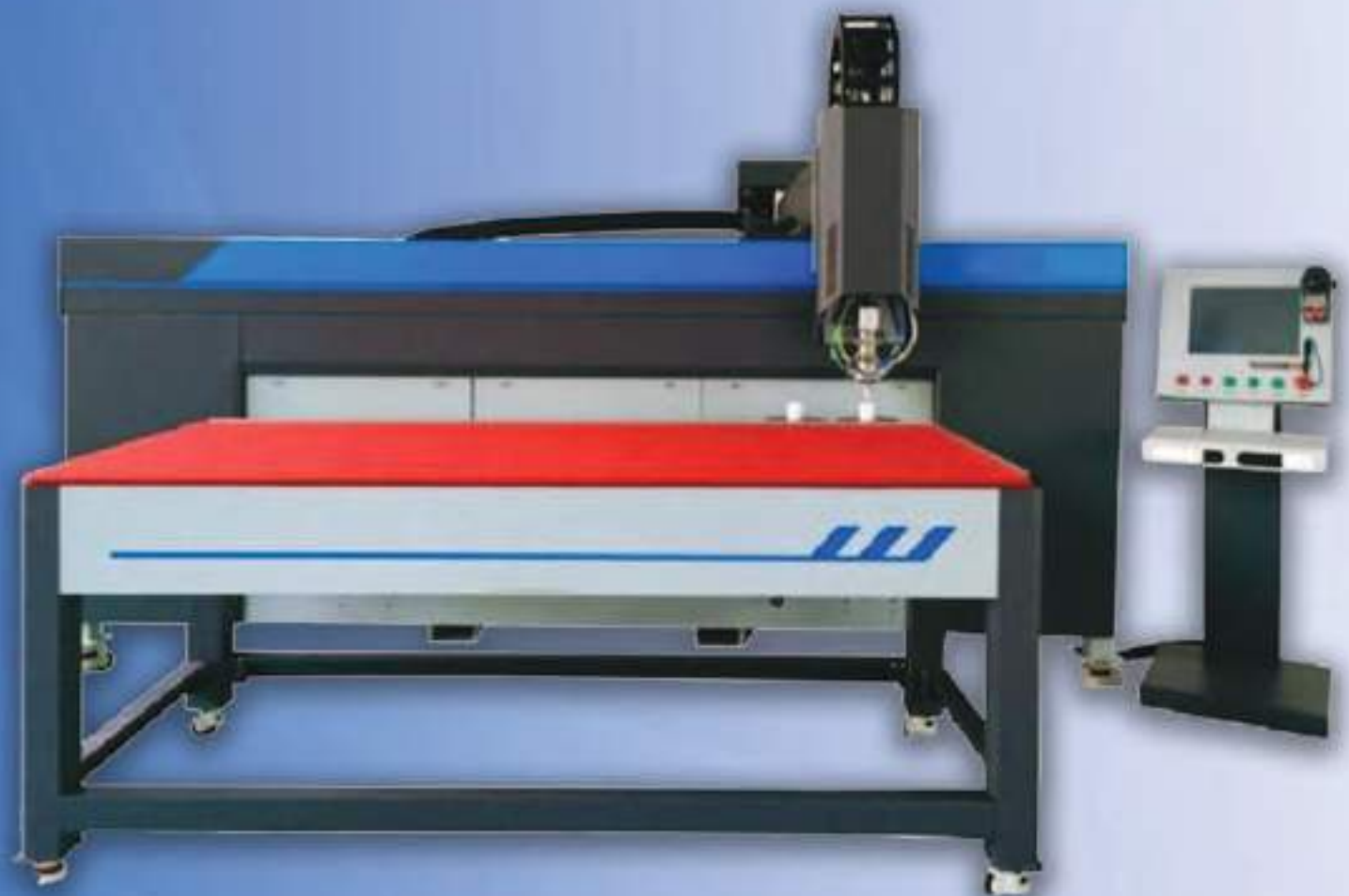


**CARE FOR
SWITCHGEARS!**

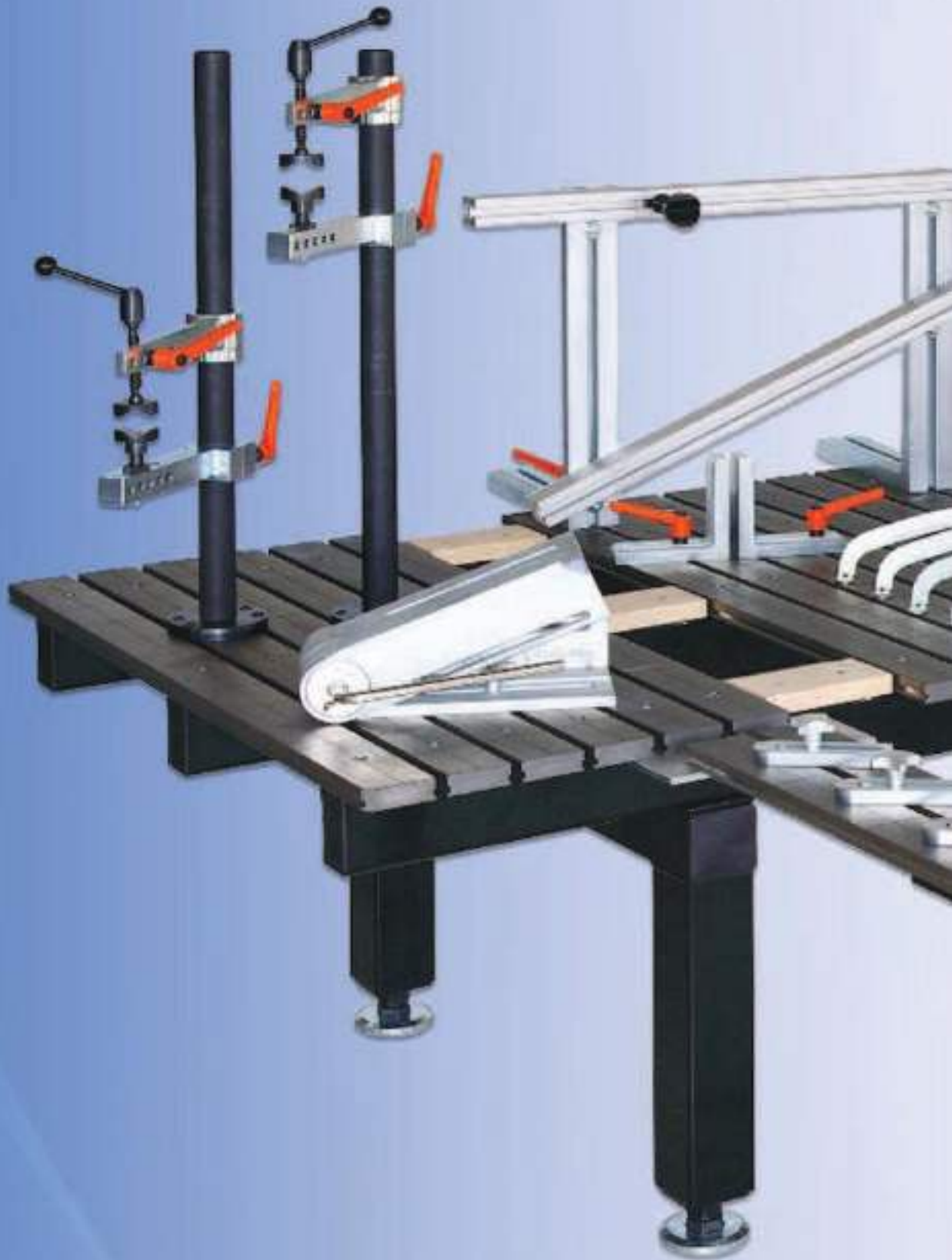
INNOVATING MACHINE TOOL SOLUTIONS WORLDWIDE

Welcome to RSM Machinery, your dedicated partner in exporting specialized machine tools to a global clientele. Specializing in a diverse range including Corner Forming Machines, V Grooving Machines, Fastener Insertion Machines, Panel Benders, PU gasket CNC Stud Welders, Box Grinders, Bender Followers, and more, we cater to the diverse needs of industries worldwide.

Global Reach, Local Excellence With a presence in over 10 countries spanning Germany, Spain, France, England, Greece, Finland, Norway, Canada, South America, the Middle East, Australia, Austria, Africa, and Southeast Asia, RSM Machinery is recognized for delivering cutting-edge machine tools and accessories tailored to meet international standards.







WELDING WITH PRECISION

Forster Welding Table as a construction kit and clamping system for T-slot system Companies who do an excellent job as an employer to strengthen their region are awarded each year with this business promoting loan. Our modular welding tables are designed with a "T slot" table top. This allows for the simple addition of our 3D clamping system.



because the slats simply slide to accommodate accessories at any point during the welding process. The table tops are equipped with H7 holes coated with our "spatter resistant" coating to ensure longevity. The 3D welding table allows for access to all sides of a welding project and eliminates the need to move or change positions to get to your metal work.

INNOVATIVE WELD CLEANING TECHNOLOGY

The new automatic electrolyte supply system for all electrochemical cleaning devices. This professional tool enables direct and correctly dosed supply of electrolytes during the weld seam cleaning process via a carbon fibre brush. Large areas can be easily etched in one go without putting down the etching head. This helps you achieve quick, clean and dark etching. An all-round perfect result. This professional tool also enables a direct continuous electrolyte supply during etching.





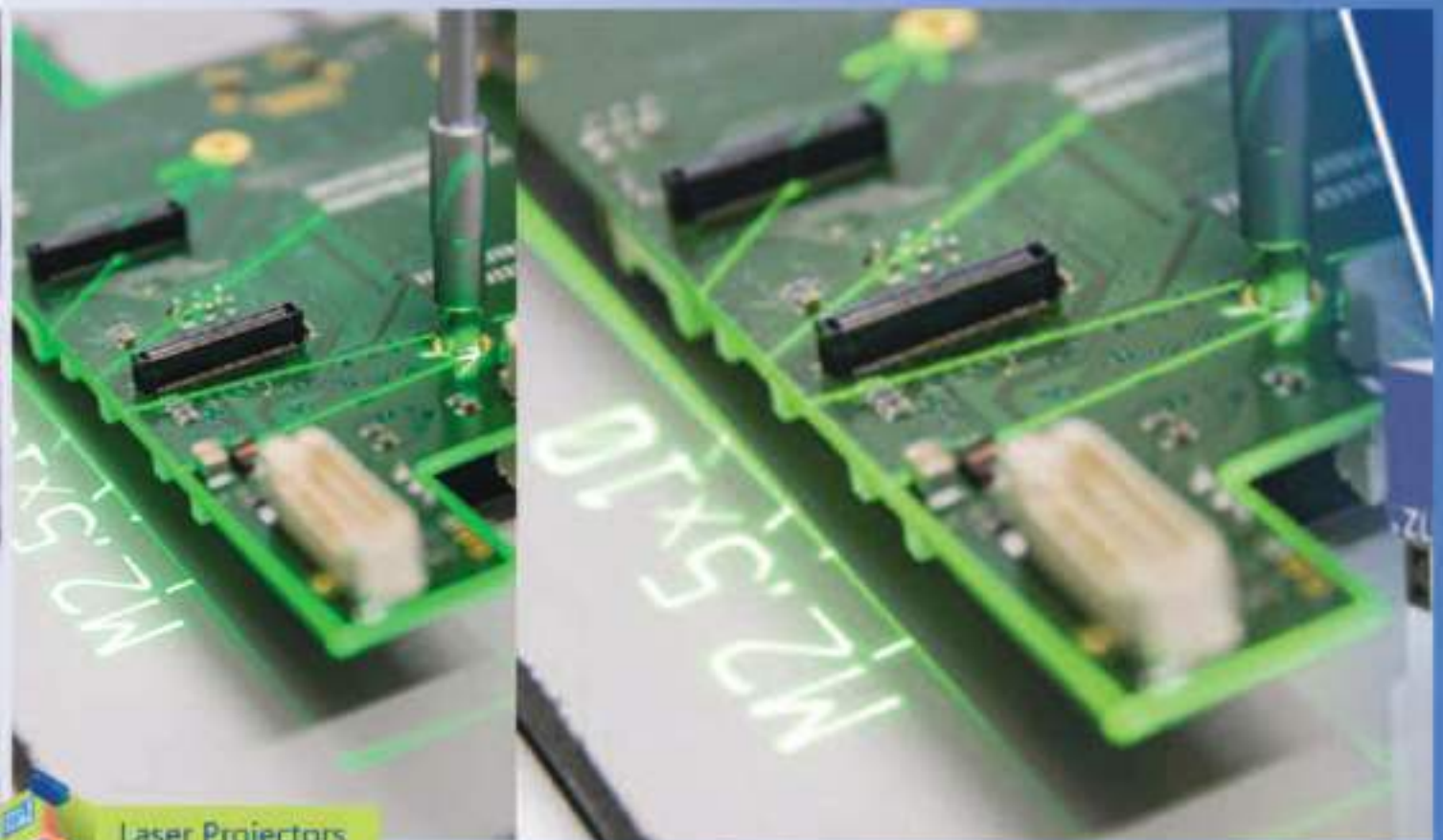
PROJECTORS WITH INNOVATIVE LIGHT

Located in the heart of the Black Forest in Freiburg, Germany, Z-LASER has been developing and producing innovative, high-quality laser solutions since 1985. By providing visual guidance and orientation for people as well as machines, our lasers contribute to optimizing your production processes, ensuring quality, and to using resources carefully. From wood processing and electronics manufacturing to textile and paper production, to the automotive and building materials industries – laser innovations from Freiburg are used wherever reliable precision and efficient high-performance processes are called for.



Z-LASER

An Exaktera Company



Laser Projectors

ELEGANCE TOWER





Redefining Success Across Borders
COMING SOON



Registered Office

Level2, Elegance Tower Mathura Road
Jasola, New Delhi-110025

Technical Centre

Plot No. 39, Block-C, Sector-63,
Noida, Uttar Pradesh-201301

Branches

Chennai, Noida

 +91 9873550525  support@optimum.net.in  www.optimum.net.in